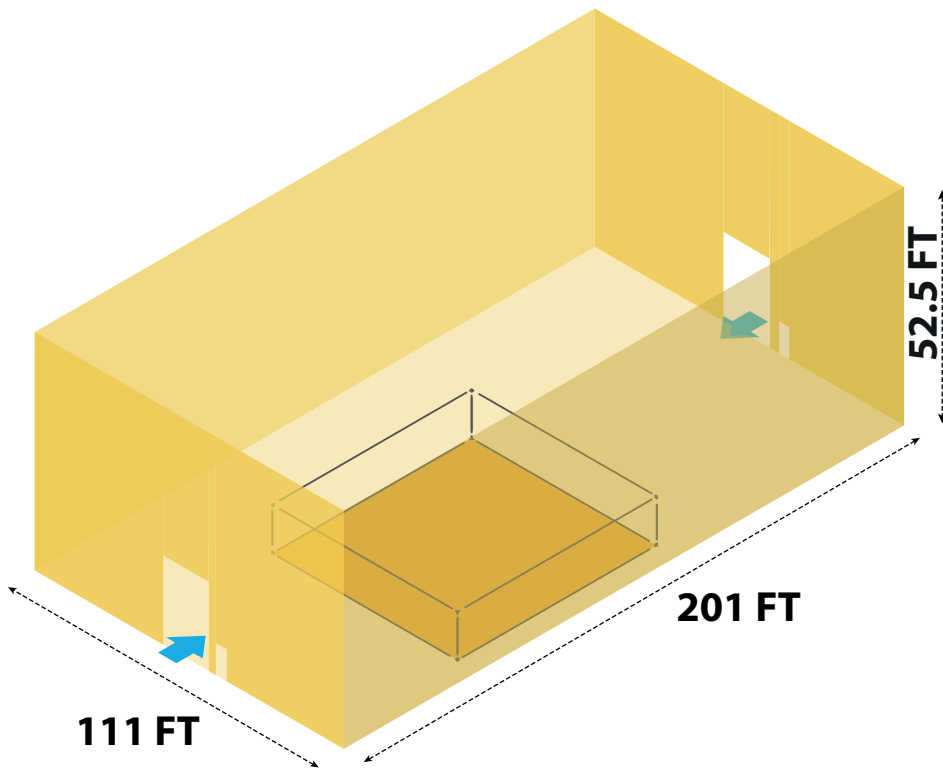
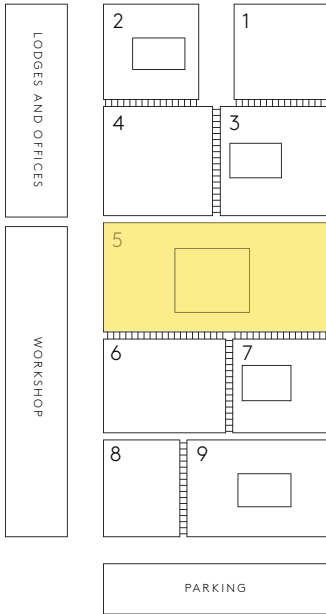
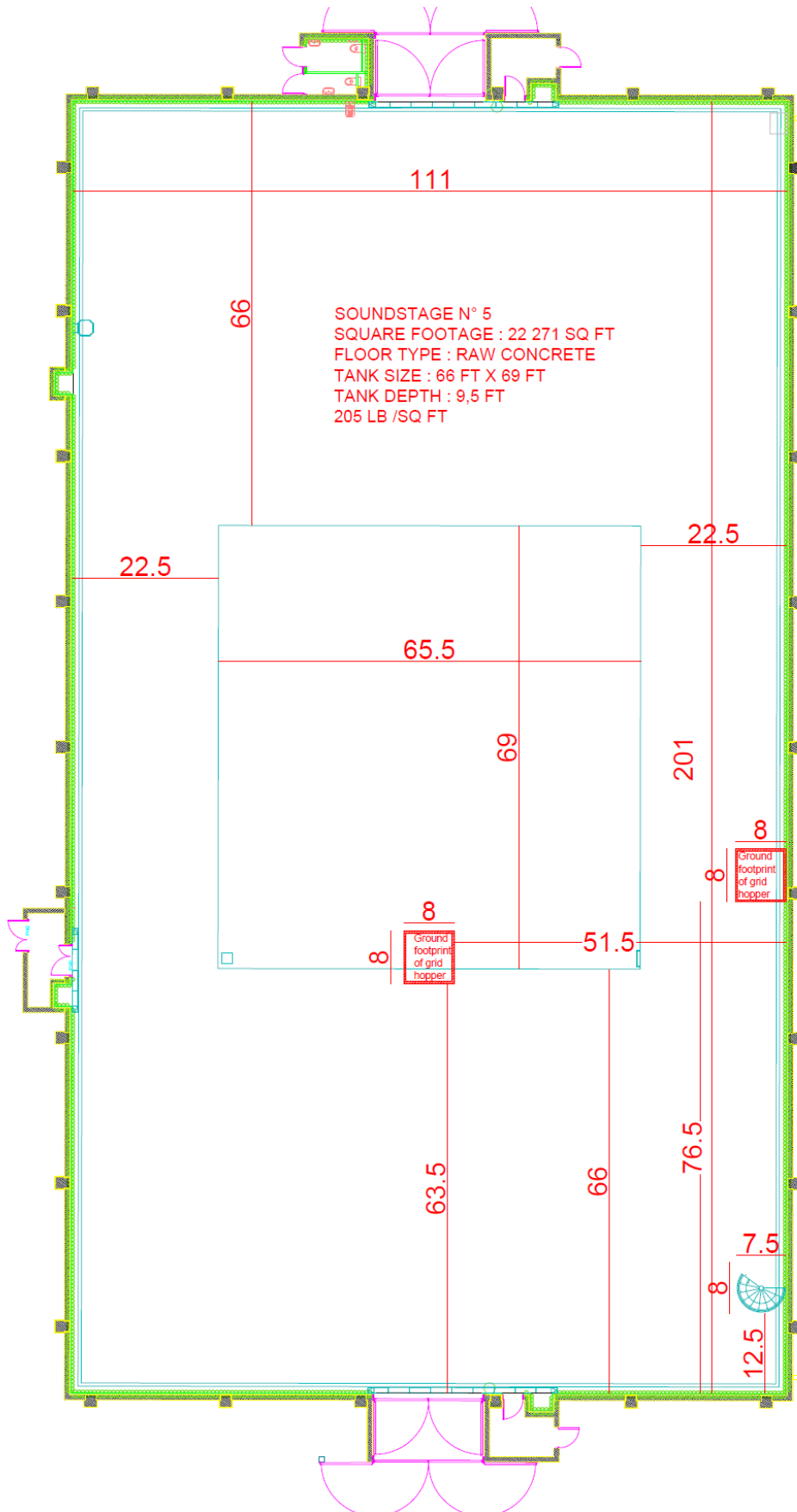


# Sound Stage 5



SQUARE FOOTAGE : 22 271 SQ FT  
LENGTH : 201 FT  
WIDTH : 111 FT  
HEIGHT TO GRID : 52.5 FT  
FLOOR TYPE : RAW CONCRETE  
ELECTRIC POWER : 1054 KW  
TANK SIZE : 66 FT X 69 FT  
TANK DEPTH : 9,5 FT  
205 LB /SQ FT

# Technical drawing





## **SOUND STAGE 5**

### STAGE

ACCESS : Two elephant double doors each with a total opening of w: 16.4 FT x h: 18.4 FT + three small side doors

OVERLOAD CAPACITY : 205 LB/SQ FT

FLOORING : Smooth untreated concrete

ACOUSTIC FADING : 20 NR, 25 dB(A) (compatible with low speed air conditioning)

SILENT AIR CONDITIONING fit to lower ground temperature by 41°F every 30 minutes

GROUND TEMPERATURE 35.6°F for outside temperature of 19.4°F

ELECTRICAL POWER : 1054 KW

LOW VOLTAGE ELECTRICAL BOARDS with individual meters

WALLS COVERING : Wall sides lined with 4 wooden slats spaced every 9.8 FT

FLUORESCENT CEILING LIGHTS

MAINTENANCE : Cold water sink and settling tank, cleaning station, floor drainage, surrounding gutters and decanting bed

RED LIGHTS : Above all doors

### GRID

GRID LOAD : 30.7 LB/SQ FT

GRID MADE OF METAL SLATS 0.5 FT wide with a 0.25 FT spacing, peripherally framed by metal duckboard

ACCESS TO GRID : Encased snail staircase + one caged ladder

TWO GRID SHAFTS which allow hoists with 1.1 LB max load each

### TANK SPECIFICATIONS

COVER : wood planks 3.3 FT x 6.6 FT set on removable metal pilings with overload capacity of 205 LB/SQ FT

SIZE : l: 69 FT x w: 66 FT x d: 9.5 FT

FLOOR AND WALL FINISH : Untreated concrete